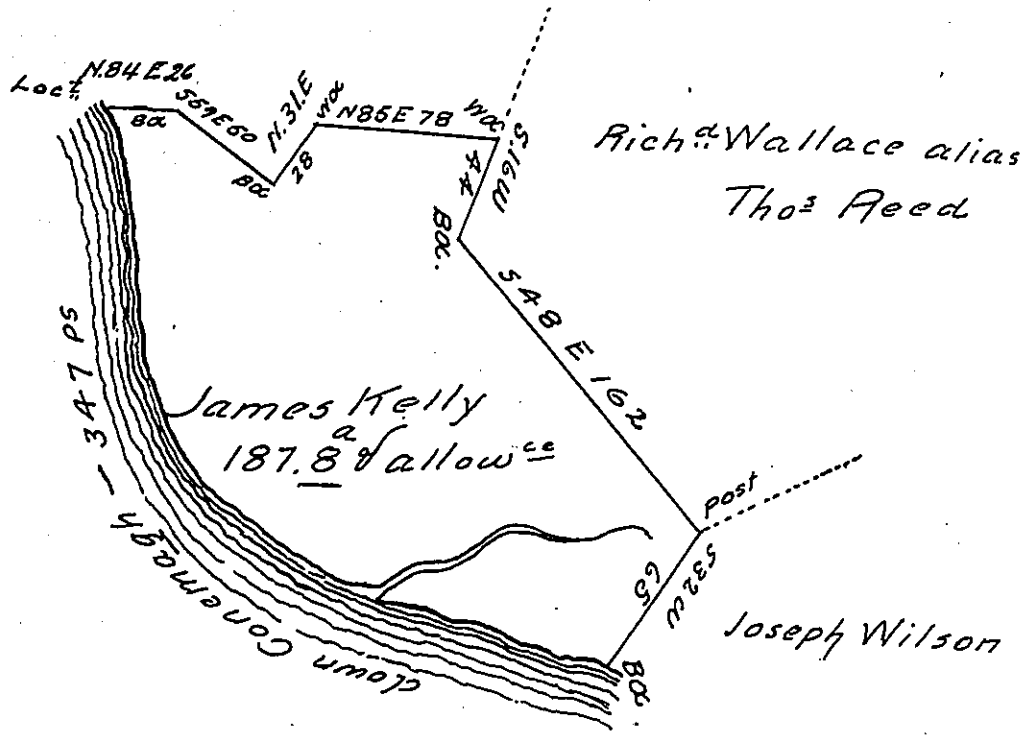


Wm Aspey



Survey'd to James Kelly on the 15th June 1785 the above described Tract of One hundred & eighty seven acres & three quarters of an acre & allowance of Six p Cent. Situate on the North side of Conemagh River adjoining Joseph Wilson Thomas Reed & William Aspey. Including an Improvement in Westmoreland County. By Warrant of the 3^d day of Nov^r 1784.

Joshua Elder D.S.

John Lukens Esq^r J Gen^l

IN TESTIMONY that the above is a copy of the original remaining on file in the Department of Internal Affairs of Pennsylvania, made conformably to an Act of Assembly approved the 16th day of February, 1833, I have hereunto set my Hand and caused the Seal of said Department to be affixed at Harrisburg, this first day of August 1905

Joseph R. Brown
Secretary of Internal Affairs.